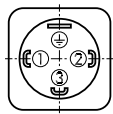

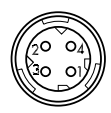
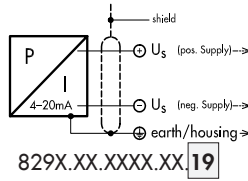


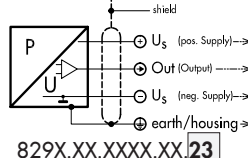


Elektrischer Anschluss / Raccordement électrique / Electrical connection

Schutzart/ Protection	IP65	IP69K	IP69K
Ausführung Exécution Execution	EN175301-803-A (DIN43650-A) 04	Cable 78	DIN 72585 Code 1 25
Ausgangssignal Signal de sortie Output		Abschirmung écran / shield 	
 829X.XX.XXXX.XX 19	standard 2 1 	with accessory 92 1 2 	blue: not conn. brown - black yellow/green -
 829X.XX.XXXX.XX 23			brown blue black yellow/green 1 2 4 3

Output	Load resistance	I _{SUPPLY}	U _{SUPPLY}	
4 ... 20 mA	(U _{Supply} -9V)/20mA	≤12 mA	9 ... 32 VDC	829X.XX.XXXX.XX 19 ..
0.5... 4.5 VDC	≥15.0 kΩ		5 VDC ±0.25 VDC ratiometrisch/ ratiométrique/ ratiometric	829X.XX.XXXX.XX 23 ..

Anziehdrehmoment Druckanschluss/ Couple de serrage raccord de pression / Torque moment pressure connection

8293 (EPR):	8293.XX.XX 17 XX... 8293.XX.XX 19 XX...	G 1/4": 25 Nm ± 5Nm R 1/4": anwendungsspezifisch/dépendante l'application/depending on application
8298 (EPN):	8298.XX.XX 17 XX... 8298.XX.XX 19 XX... 8298.XX.XX 28 XX... 8298.XX.XX 29 XX...	G 1/4": 25 Nm ± 5Nm R 1/4": anwendungsspezifisch/dépendante l'application/depending on application M14x1.5 (Kegeldichtung/ Joint conique/ Conical seal: 58°): 30 Nm ± 5Nm M18x1.5 (Kegeldichtung/ Joint conique/ Conical seal: 58°): 30 Nm ± 5Nm

Betriebstemperatur / Température de service / Operating temperature

8293 (EPR)/ 8298 (EPN): -40°C... +125°C (-40°F...+260°F)

Lagertemperatur / Température de stockage / Storage temperature

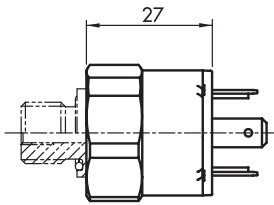
8293 (EPR)/ 8298 (EPN): -40°C... +125°C (-40°F...+260°F)



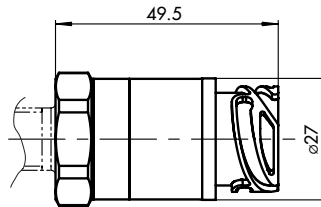
Überdruck / Surpression / Overpressure

Nenndruck pression nominal nominal pressure		Überdruck Surpression Over pressure	
[bar]	[psi]	[bar]	[psi]
0...0.2	0...2.5	1.2	17
0...0.4	0...5	1.2	17
0...0.6	0...7.5	1.5	20
0...1.0	0...15	2	29
0...1.6	0...20	3.5	50
0...2.5	0...30	5	70
0...4.0	0...50	8	115
0...6.0	0...100	12	170
0...10	0...150	20	290
0...16	0...250	32	464
0...25	0...400	50	725
0...40	0...500	80	1160
0...60	0...1000	120	1740
0...100	0...1500	200	2900
0...160	0...2000	320	4640
0...250	0...3000	500	7250
0...400	0...5000	800	11600
0...600	0...7500	1000	14500
0...1000	0...10000	1800	26100
0...1600	0...20000	3000	43500
0...2000	0...30000	3000	43500
0...2500	0...35000	3000	43500

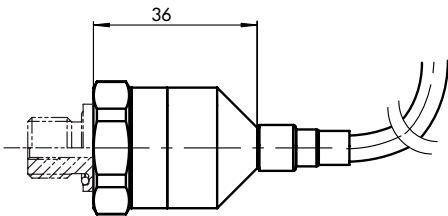
Massbilder / Cotes d'encombrement / Dimensions



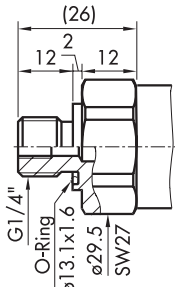
8293.XX.XX.XX.04.XX.XX
8298.XX.XX.XX.04.XX.XX



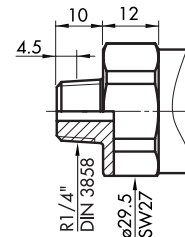
8298.XX.XXXX.25.XX.XX



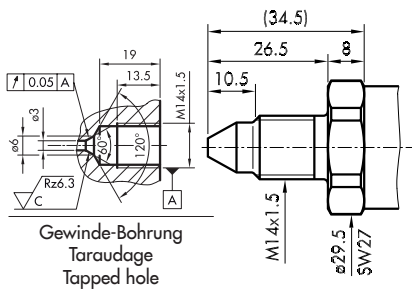
8298.XX.XXXX.78.XX.XX



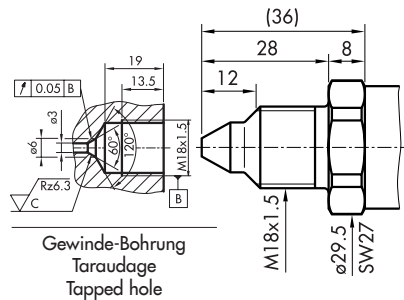
8293.XX.XX.17.XX.XX
8298.XX.XX.17.XX.XX



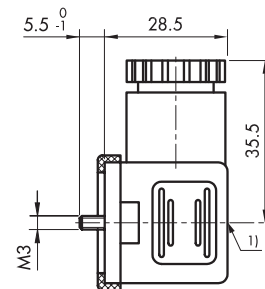
8293.XX.XX.19.04.XX
8298.XX.XX.19.04.XX



8298.XX.XX.28.XX.XX



8298.XX.XX.29.XX.XX



8293.XX.XXXX.XX.XX.58
8298.XX.XXXX.XX.XX.58

1) Torque moment 50...60 Ncm

H73311g Trafag AG 04/2009

We reserve the right to make alternations as technical progress may warrant.