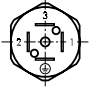
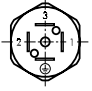
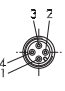
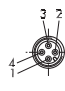
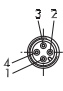
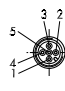
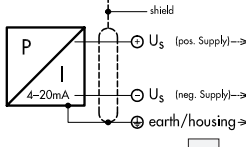

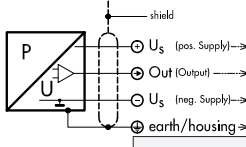



Elektrischer Anschluss / Raccordement électrique / Electrical connection

Schutzart/Protection ¹⁾	IP65 ¹⁾	IP67 ¹⁾			
Ausführung Exécution Execution	Industrial Standard (DIN43650 C193) 01 	M12x1			
		4-pol. 32			5-pol. 35
		Standard	with accessory 95	with accessory 96	
Ausgangssignal Signal de sortie Output					
 825X.XX.XXXX.XX. 19	2 1 	1 3 4	- - -	- - -	4 1 5
 825X.XX.XXXX.XX. 14/16/17/23	1 2 3 	1 2 3 4	1 3 4 2	1 4 3 2	2 4 3 5

¹⁾ nur mit vorschriftsmässig montierter Kabeldose gültig
valable seulement avec fiche femelle montée selon instructions
provided with female connector is mounted according to instructions

Output	Load resistance	I _{SUPPLY}	U _{SUPPLY}	
4 ... 20 mA	(U _{Supply} - 9V)/20mA		24(9 ... 32) VDC	825X.XX.XXXX.XX. 19 ...
0 ... 5 VDC	≥2.0 kΩ	≤10 mA	24(9 ... 32) VDC	825X.XX.XXXX.XX. 14 ...
1 ... 6 VDC	≥2.0 kΩ	≤10 mA	24(9 ... 32) VDC	825X.XX.XXXX.XX. 16 ...
0 ... 10 VDC	≥5.0 kΩ	≤10 mA	24(15...32) VDC	825X.XX.XXXX.XX. 17 ...
0.5 ... 4.5 VDC	≥2.0 kΩ	≤10 mA	5(4.5...5.5) VDC ratiometrisch/ ratiométrique/ ratiometric	825X.XX.XXXX.XX. 23 ...

Einschaltverzögerung / Retard à l'enclenchement / Switch-on delay

1 s

Anziehdrehmoment Druckanschluss / Couple de serrage raccord de pression / Torque moment pressure connection

max. 25Nm

Betriebstemperatur / Température de service / Operating temperature

NAT (8251): -25°C...+85°C (-15...+185°F) / NAH (8253), NAE (8255), NSL (8257): -40°C...+125°C (-40...+260°F)

Lagertemperatur / Température de stockage / Storage temperature

-25°C ... +85°C (-15...+185°F)

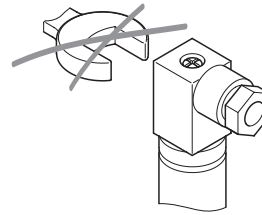
Medientemperatur / Température de fluide / Media temperature

NAT (8251): -25°C...+125°C (-15...+260°F) / NAH (8253), NAE (8255), NSL (8257): -40°C...+125°C (-40...+260°F)



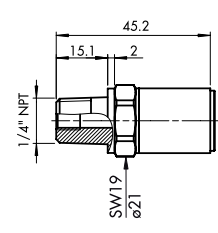
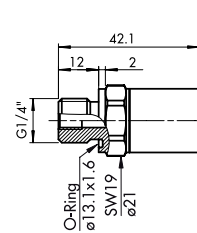
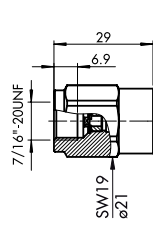
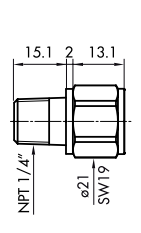
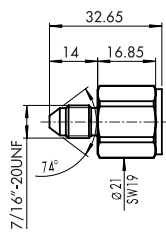
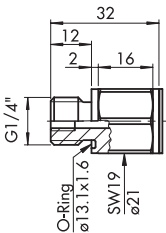
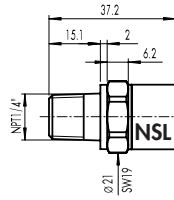
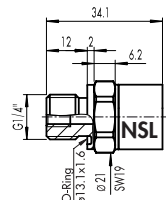
Nenndruck pression nominal nominal pressure		Überdruck Surpression Over pressure	
[bar]	[psi]	[bar]	[psi]
0...0.2	0...2.5	1.2	17
0...0.4	0...5	1.2	17
0...0.6	0...7.5	1.5	20
0...1.0	0...15	2	29
0...1.6	0...20	3.5	50
0...2.5	0...30	5	70
0...4.0	0...50	8	115
0...6.0	0...100	12	170
0...10	0...150	20	290
0...16	0...250	32	464
0...25	0...400	50	725
0...40	0...500	80	1160
0...60	0...1000	120	1740
0...100	0...1500	200	2900
0...160	0...2000	320	4640
0...250	0...3000	500	7250
0...400	0...5000	800	11600
0...600	0...7500	1000	14500
0...1000	0...10000	1800	26100
0...1600	0...20000	3000	43500
0...2000	0...30000	3000	43500
0...2500	0...35000	3000	43500

Steckerausführung 01/34: Nur original Schraube verwenden!
 Exécution fiche 01/34: Utilisez seulement la vis originale!
 Plug execution 01/34: Use only original screw!



Nicht an Kabeldose drehen.
 Ne pas tourne la fiche femelle
 Don't turn the female connector

Massbilder / Cotes d'encombrement / Dimensions



825X.XX.2X17.XX

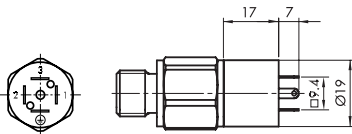
825X.XX.2X18.XX

825X.XX.2X30.XX

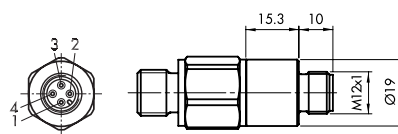
825X.XX.2X24.XX

825X.XX.4X17.XX

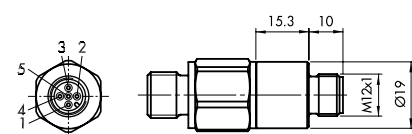
825X.XX.4X30.XX



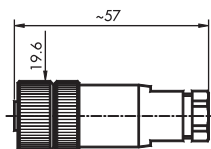
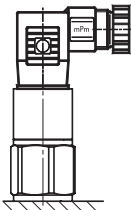
825X.XX.XXXX.01.XX



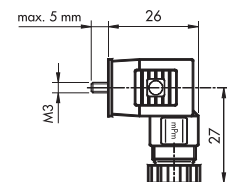
825X.XX.XXXX.32.XX



825X.XX.XXXX.35.XX



825X.XX.XXXX.XX.33



825X.XX.XXXX.XX.34

NSL: Empfohlene Montageposition
 NSL: Position de montage recommandée
 NSL: Recommended mounting position