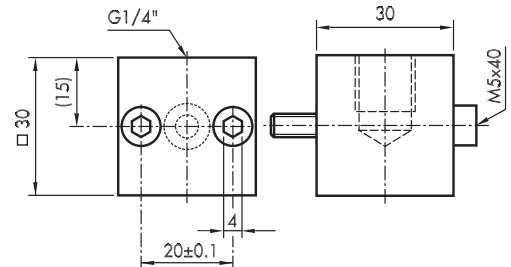
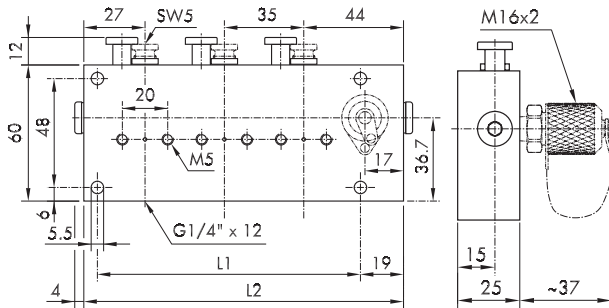


Massbilder / Cotes d'encombrement / Dimensions



V1

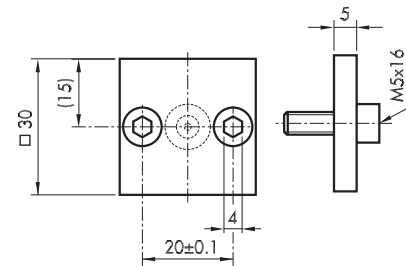
**MBA/VBA/MAA:**

L1= (Anz. Instrumente; No. des instruments; No. of instruments x 35) +11  
L2= (Anz. Instrumente; No. des instruments; No. of instruments x 35) +36

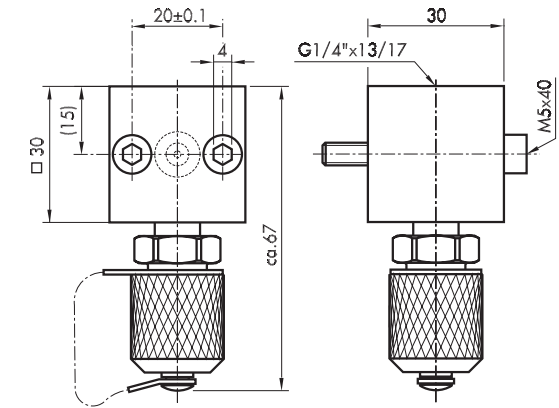
**VAA/MBB:**

L1= (Anz. Instrumente; No. des instruments; No. of instruments x 35) +7  
L2= (Anz. Instrumente; No. des instruments; No. of instruments x 35) +19

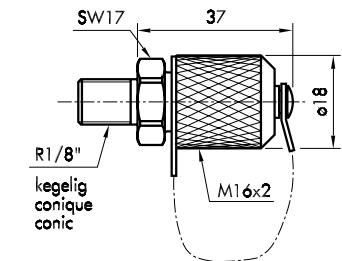
**VBA/VAA/MBA/MAA/MBB**



V2



V0



V9

Betriebstemperatur / Température de service / Operating temperature

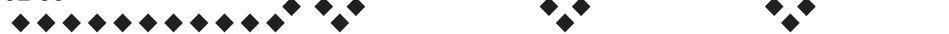
-25°C ... +85°C

Medientemperatur / Température du fluide / Media temperature

-25°C ... +110°C

Lagertemperatur / Température de stockage / Storage temperature

-25°C ... +85°C



**Messbereich / Entendue de mesure / Measuring range**

Nenndruck/ Pression nominale/ Rated pressure	max. 40 bar
Ueberdruck*/ Surpression*/ Overpressure*	max. 80 bar
Berstdruck/ Pression d'éclatement/ Burst pressure	160 bar

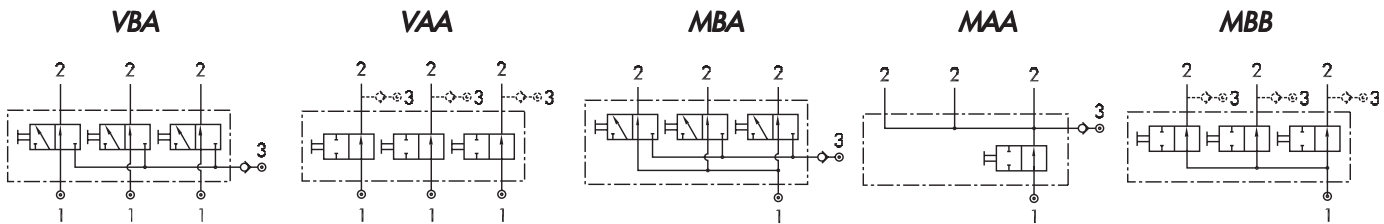
\* ohne Schaltbetätigung am Ventilblock/ sans manoeuvre de coupure en bloc de valve/ without switch-operation on the valve block

**Schaltdruck (manuell\*) / Pression de coupure (manuel\*) / Switch pressure (manual\*)**

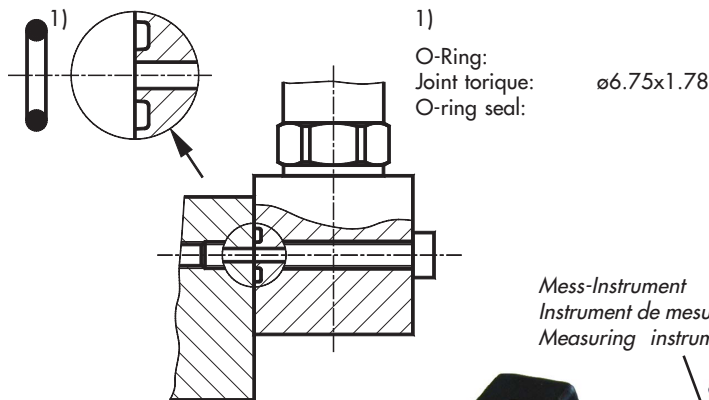
pneumatisch/ pneumatique/ pneumatic	max. 16 bar
hydraulisch/ hydraulique/ hydraulic	max. 40bar

\* mit Schaltschraube/ avec vis de coupure/ with switching-screw

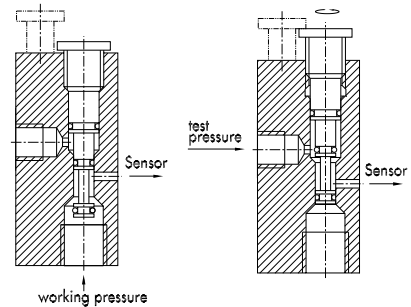
**Schaltschema / Schéma de réglage / Diagram of connections**



**Anziehdrehmomente / Couples de serrage / Torque mountings**



**Bedienung / Manipulation / Manipulation**



Druck-Mess Instrument 2  
 Pression-mesure instrument 2  
 Pressure-measuring instrument 2

2Nm

Prüfanschluss 3  
 Raccord de cntrôle 3  
 Test connection (Test press.) 3

(V9)

Druckanschluss 1  
 Pression à l'entrée 1  
 Connecting pressure (working pressure) 1

Anschlussblock  
 Bloc de connexion (V1/ V0): 2Nm  
 Connection adapter

Anschlag für Schaltschraube  
 Arrêt pour vis de coupure  
 Stopper for switching screw

Schaltschraube  
 Vis de coupure  
 Switching screw

Verschlussplatte  
 Appliquant l'obturateur (V2): 2Nm  
 Blanking plate