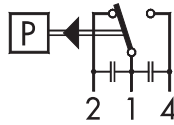


Elektrischer Anschluss / Connexion électrique / Electrical connection



Mikroschalter als Ein-, Aus- oder Umschalter
anschliessbar
Klemmen 2 - 1:
Bei Druckanstieg Kontakt öffnend
Klemmen 1 - 4:
Bei Druckanstieg Kontakt schliessend

Le micro switch est utilisable comme enclencheur,
déclencheur ou commutateur
Bornes 2 - 1:
Déclenchant avec pression montante
Bornes 1 - 4:
Enclenchant avec pression montante

It is possible to connect the micro switch as a
cut-in, cut-out or change-over switch.
Terminals 2 - 1:
Opening at rise of pressure
Terminals 1 - 4:
Closing at rise of pressure

IP-Schutzart / IP-Protection / IP-Protection

IP65

Anziedrehmoment Druckanschluss / Couple de serrage raccord de pression / Torque moment pressure connection

max. 25Nm

Betriebstemperatur / Température de service / Operating temperature

-25°C ... +70°C

Medientemperatur / Température du fluide / Media temperature

-40°C ... +150°C

for Types: 94X.XXXX.701/703/705/707/709/711/713/715/723/725: -15°C ... + 150°C
94X.XXXX.700/702/704/706/708/710/712/714/722/724: -30°C ... + 100°C

Lagertemperatur / Température de stockage / Storage temperature

-25°C ... +85°C

Betriebsdruck / Pression de fonctionnement / Operating pressure

Type: 900.../901.../902.../904.../905.../906.../912.../915
903.../907.../940.../941.../942...

Type: 944.../947...

Bereich	0.02 ... 0.25	Überdruck	max.	2
Plage	0.03 ... 0.40	Surpression		2
Range	0.03 ... 0.60	Over pressure		4
	0.05 ... 1.0			4
[bar]	-0.9 ... 1.5	[bar]		10
	0.2 ... 1.6			10
	0.2 ... 2.5			10
	0 ... 4.0			12
	0 ... 6.0			12
	1 ... 10			24
	1 ... 16			24
	2 ... 25			40
	4 ... 40			40
	6 ... 60			100
	10 ... 100			100

Bereich	1 ... 10	Überdruck	max.	100
Plage	4 ... 40	Surpression		200
Range	6 ... 60	Over pressure		200
	10 ... 100			200
[bar]	16 ... 160	[bar]		400
	25 ... 250			400
	40 ... 400			800
	60 ... 600			800

Type: 920.../924.../932...

Bereich P	-1 ... +6	Δ P	-0.6 ... +3.4	Überdruck	Pmax.	12
Plage	-1 ... +6		0 ... 4	Surpression		12
Range	-1 ... +8	[bar]	0 ... 6	Over pressure		12
	-1 ... +12		1 ... 10			24
[bar]	-1 ... +18		1 ... 16	[bar]		24

